



Gingerbread-By-Design

Elf House Gingerbread House Pattern

Approximate size: 7 1/2" wide x 4 1/2" deep x 9" tall

Chimney

Place all **four chimney pieces (E, D, E, D)** on a flat surface with the four bottom corners touching. Apply bead of frosting to edges of each piece. While frosting is still wet, stand-up each piece, connecting pieces together at all edges. If needed, prop each piece with a small soup can. Let dry while assembling house pieces.

Walls

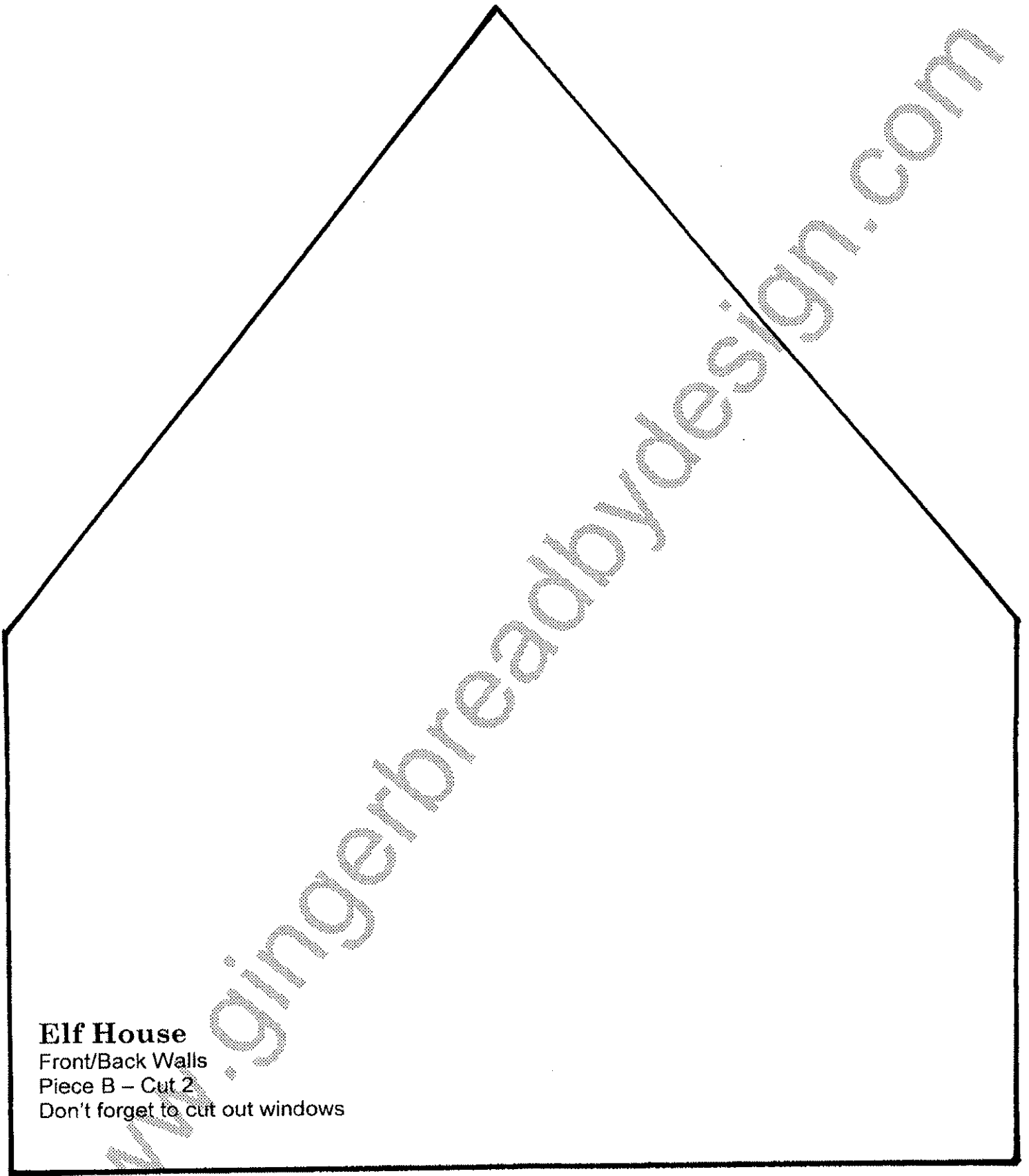
Place **four wall pieces (B, C, B, C)** flat on your base so four corners are touching. Apply a bead of frosting along the base of each piece. Apply a bead of frosting along the sides of each piece. Stand-up each wall, connecting pieces to each other at sides. Support with food cans if necessary. Let dry.



Roof

Apply a bead of frosting along top edges of wall pieces. Attach **right roof piece A**, lining up top edge and peak of house. Hold until set. Support while drying. Attach **left roof piece A**, lining up top edge and peak of house. Apply frosting down middle of roof line, filling in any gaps in roof. Let dry. Attach dried chimney to roofline with frosting.

If you have any questions, e-mail help@gingerbreadbydesign.com for assembly assistance.



Elf House

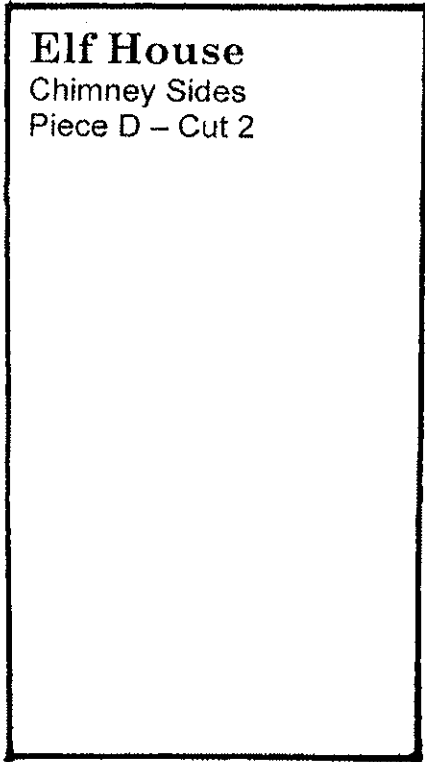
Front/Back Walls

Piece B – Cut 2

Don't forget to cut out windows

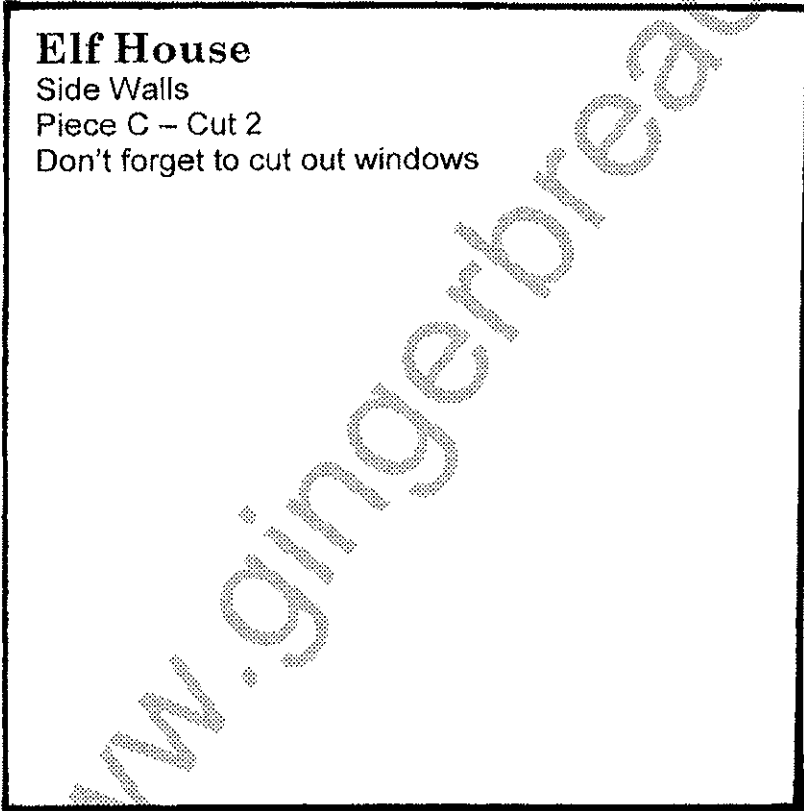
Elf House

Chimney Sides
Piece D – Cut 2

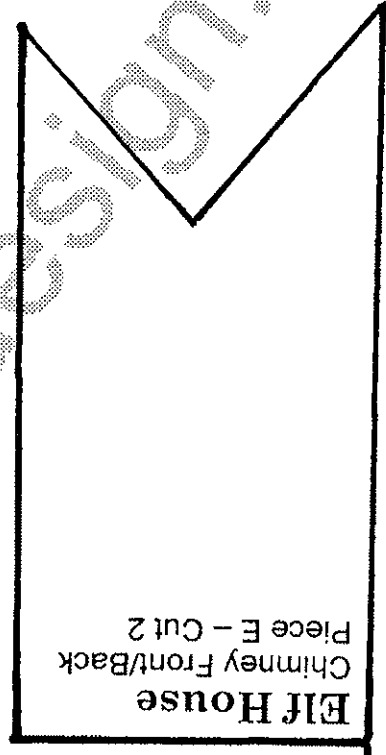


Elf House

Side Walls
Piece C – Cut 2
Don't forget to cut out windows



Elf House
Chimney Front/Back
Piece E – Cut 2



www.gingerbreadbydesign.com

Elf House
Roof Sections
Piece A – Cut 2

www.gingerbreadbydesign.com